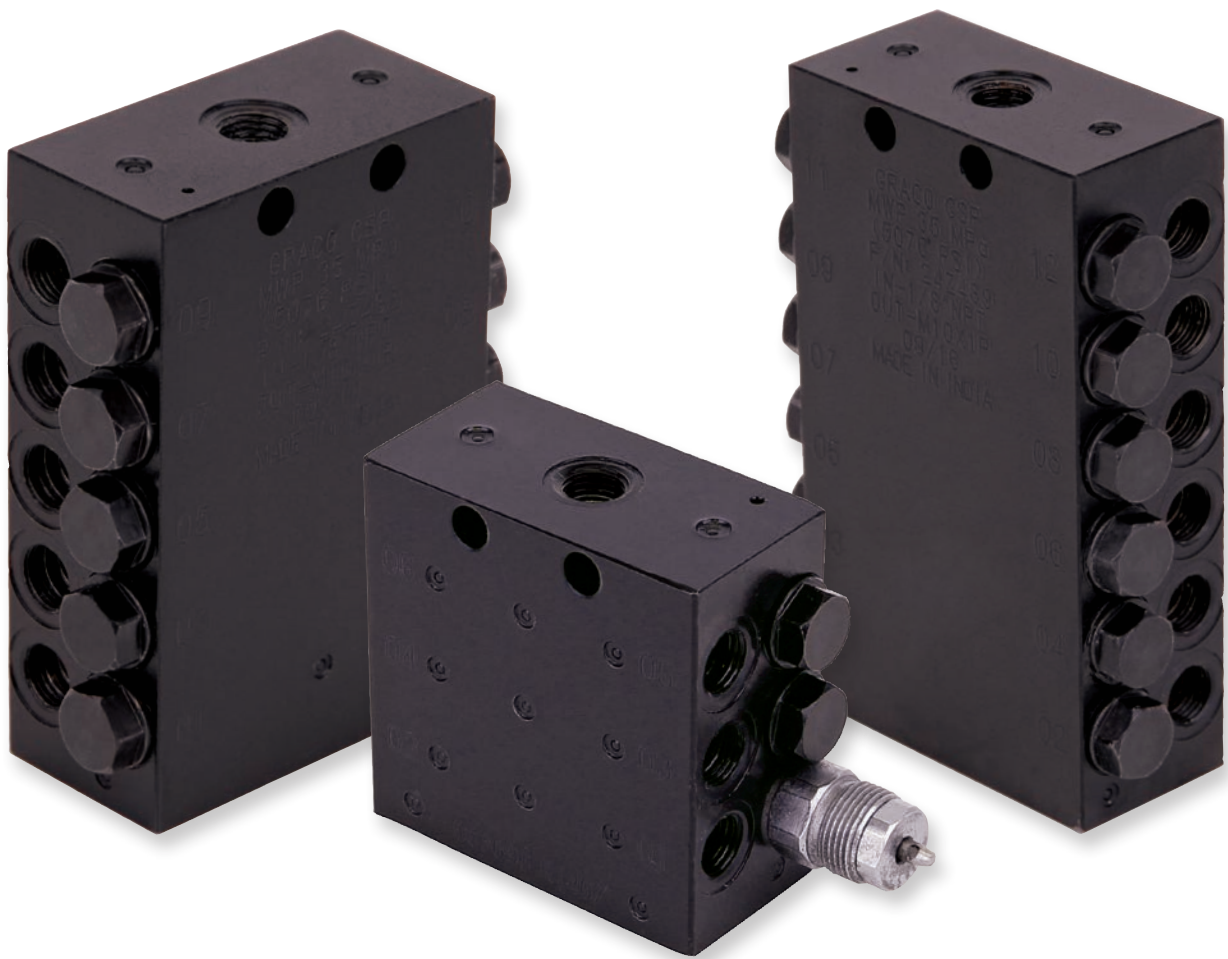




# Compact Series Progressive Valves

Graco Quality in a Compact Package



- Compact Series Progressive (CSP) valve with broad market versatility.
- Combine with field-proven G-Series pumps for a complete system solution.

PROVEN QUALITY. LEADING TECHNOLOGY.

# Rugged and Reliable Graco G-Series Pump Family

**Combine the Compact Series Progressive (CSP) Valve with Field-Proven G-Series Pumps for a Complete System Solution.**

## *Multiple Reservoir Sizes*

Choice of 2, 4, 8, 12, or 16 litre U.V.-resistant, high-impact reservoirs for oil and grease to meet the needs of your equipment

## *Power Choices*

Connect to DC (12V or 24V) and AC (90-240V) power sources with CPC or DIN-style connectors for easy, no hassle installations

## *Multiple Controller and Pump Options*

Extensive choices within the G-Series Pump family to satisfy your application requirements.

## *Variable Pressure*

Maximum working pressure of 352 bar (5100 psi) in up to NLGI #2 grease





***1/8" NPT or BSPP Inlet***

***Built-in Durability***

Zinc iron plating stands up to harsh environments

***Variety of Configurations***

6-22 outlets, available with or without indicators

***High Output Pressure***

Maximum working pressure of 350 bar (5,076 psi)

***Output to Meet Your Needs***

0.2 cc (0.012 in<sup>3</sup>)/stroke output with the ability to double-up outlets if greater output is required



# Compact Series Progressive (CSP)



## Rugged and Reliable Graco G-Series Pump Family

Select the Graco G-Series Pump which suits your power, feedback, and fluid capacity requirements.



Select the Pressure Relief Valve & Relief Valve Outlet Fittings



Select the CSP Divider Valve



Select the Divider Valve INLET Fittings



**1**

### Select the G-Series pump model

For a complete list of available pump models, please refer to the Industrial Lubrication Buyer's guide on [www.graco.com](http://www.graco.com)

**2**

### Select the Pressure Relief Valve & Relief Valve Outlet Fittings

	PRESSURE RELIEF VALVE	RELIEF VALVE OUTLET FITTINGS
1/4" BSP	26C176	Compression <b>17R571</b> 6mm, Straight OR <b>17R572</b> 6mm, Elbow G-Lock Push-To-Connect <b>17R569</b> 6mm, Straight
1/8" NPT	26C030	Compression <b>17T780</b> 6mm, Straight OR <b>17T781</b> 6mm, Elbow

**3**

### Select the CSP Divider Valve

		THREAD SIZE				THREAD SIZE	
# of outlets	Indicator Pin ?	1/8" NPT	1/8" BSPP	# of outlets	Indicator Pin ?	1/8" NPT	1/8" BSPP
6	NO	24Z486	24Z477	16	NO	24Z491	24Z482
	YES	24Z504	24Z495		YES	24Z509	24Z500
8	NO	24Z487	24Z478	18	NO	24Z492	24Z483
	YES	24Z505	24Z496		YES	24Z510	24Z501
10	NO	24Z488	24Z479	20	NO	24Z493	24Z484
	YES	24Z506	24Z497		YES	24Z511	24Z502
12	NO	24Z489	24Z480	22	NO	24Z494	24Z485
	YES	24Z507	24Z498		YES	24Z512	24Z503
14	NO	24Z490	24Z481				
	YES	24Z508	24Z499				

**4**

### Select the Divider Valve INLET Fittings

1/8" BSPP Valve	Compression <b>17L548</b> 6mm, Straight OR <b>17L546</b> 6mm, Elbow G-Lock Push-To-Connect <b>17L545</b> 6mm, Straight OR <b>17L449</b> 6mm, Elbow
1/8" NPT Valve	Compression <b>17T780</b> 6mm, Straight OR <b>17T781</b> 6mm, Elbow

# SYSTEM DESIGN SELECTOR METRIC



Select the Main Line HP Hose



Select the Divider Valve OUTLET Fittings



Select the Secondary Line HP Hose or Nylon Tube



Select the LUBE POINT Fitting

5

6

7

8

5

## Select the Main Line (from Pump to CSP Divider Valve)

Hose Studs (compression OR PTC)		+	Hose Sleeve	+	HP Hose (8.6mm OD)	+	Hose Sleeve	+	Hose Studs	
Compression	17R565 6mm, Straight		17L648		17S552 25m		17L648		17R565 6mm, Straight	
	OR			OR		17R566 6mm, Elbow				
	17R566 6mm, Elbow			17S553 50m		OR				
G-Lock Push-To-Connect	17L649 6mm, Straight			OR		17S554 100m			G-Lock Push-To-Connect	OR
	OR			17S555 200m		17L649 6mm, Straight				
	17L650 6mm, Elbow					OR				
								17L650 6mm, Elbow		

6

## Select the Divider Valve OUTLET Fittings

Compression	17L550 6mm X M10
G-Lock Push-To-Connect	17L458 6mm X M10
<b>Nylon Tube only</b>	17L543 6mm X M10

7

## Select the Secondary Line (from CSP Divider Valve to Lube Point)

HIGH PRESSURE HOSE										
Hose Studs		+	Hose Sleeve	+	HP Hose (8.6mm OD)	+	Hose Sleeve	+	Hose Studs	
Compression	17R565 6mm, Straight		17L648		17S552 25m		17L648		17R565 6mm, Straight	
	OR			OR		17R566 6mm, Elbow				
	17R566 6mm, Elbow			17S553 50m		OR				
G-Lock Push-To-Connect	17L649 6mm, Straight			OR		17S554 100m			G-Lock Push-To-Connect	OR
	OR			17S555 200m		17L649 6mm, Straight				
	17L650 6mm, Elbow					OR				
								17L650 6mm, Elbow		

NYLON TUBE (6 mm)									
17S556 6mm x 25m	OR	17S557 6mm x 50m	OR	17S558 6mm x 100m	OR	17S559 6mm x 200m			

8

## Select the LUBE POINT Fittings

Thread size	COMPRESSION		G-LOCK PUSH-TO-CONNECT	
	Straight	Elbow	Straight	Elbow
6mm X M6	17R573	17R574	17L457	17L448
6mm X M8	17R575	17R576	17L456	17L447
6mm X M10	17R577	17R578	17L455	17L446
6mm X 1/4" BSP	17R571	17R572	17R569	-
6mm X 1/8" BSP	17L548	17L546	17L545	17L449



# Technical Specifications

## Graco G3 SP Pump

The G3 SP (Series Progressive) combines the robust, proven design of our G-Series pumps with simple programming and valuable system feedback. The only programming requirements are number of cycles and off time between lube events.



VOLTAGE	RESERVOIR SIZE			
	2 L	4 L	8 L	12 L
12 VDC	96G221	96G222	–	–
24 VDC	96G223	96G224	96G225	96G226
90-240 VAC	96G227	96G228	–	–

Please note that G3 SP pumps are for use in Series Progressive systems only and they require a proximity switch.

## Pump Re-Fill options:

### OPTION 1 Re-fill via Grease Zerk



562857

Standard option on all G-Series Pumps

Use standard grease gun (Item #562857) to fill the reservoir

### OPTION 2a Re-fill via High Capacity Fill Zerk (#24M644)



24M644

\* Order Item #24M644 (1/4" NPT), and use instead of grease zerk or the 2 alternative ports



121474

\* Use together with female coupler Item #121474, OR with any other coupler that conforms to ISO 7241-1 Series B

### OPTION 2b Re-fill via High Capacity Fill Zerk (#247886)



247886

\* Order the manual fill pump (Item #247886)

\* Female coupler #121474 already included in the manual fill pump package

### OPTION 2c Re-fill via Manual Hand Pump



571162

\* Order Item #571162

\* Screws directly into the pump element port  
 - remove the unused G3 pump element plug  
 - insert the grease fill pump into the port

## Other

### Pressure Relief Valve & Relief Valve Outlet Fittings



PART NUMBER	DESCRIPTION
26C176	Kit, Relief Valve and Fittings, BSP
26C030	Kit, Relief Valve and Fittings, NPT
17R569	Fitting, PTC, Straight, 6mm X 1/4", BSP
17R571	Fitting, Compression, Straight, 6mm X 1/4", BSP
17R572	Fitting, Compression, Elbow, 6mm X 1/4", BSP
17T780	Fitting, Compression, Straight, 6mm X 1/8" NPT
17T781	Fitting, Compression, Elbow, 6mm X 1/8" NPT

### CSP Inlet Fittings



PART NUMBER	DESCRIPTION
17L449	Fitting, PTC, Elbow, 6mm X 1/8", BSP
17L545	Fitting, PTC, Straight, 6mm X 1/8", BSP
17L546	Fitting, Compression, Elbow, 6mm X 1/8", BSP
17L548	Fitting, Compression, Straight, 6mm X 1/8", BSP
17T780	Fitting, Compression, Straight, 6mm X 1/8", NPT
17T781	Fitting, Compression, Elbow, 6mm X 1/8", NPT

### HP Hose & Nylon Tube Mounting Accessories



PART NUMBER	DESCRIPTION
17L648	Sleeve, Hose
17L649	Stud, Straight, 6mm, G-Lock Push-To-Connect
17L650	Stud, Straight, 6mm, G-Lock Push-To-Connect
17R565	Stud, Straight, 6mm, Compression
17R566	Stud, Elbow, 6mm, Compression

### CSP Outlet Fittings

PART NUMBER	DESCRIPTION
17L550	Fitting, Compression, 6mm X M10
17L458	Fitting, PTC, 6mm X M10
17L543	Fitting, PTC, CSP Outlet, 6mm X M10 - Nylon Tube only

### Lube Point Fittings



PART NUMBER	DESCRIPTION
17R571	Fitting, Compression, Straight, 6mm X 1/4" BSP
17R572	Fitting, Compression, Elbow, 6mm X 1/4" BSP
17L546	Fitting, Compression, Elbow, 6mm X 1/8" BSP
17L548	Fitting, Compression, Straight, 6mm X 1/8" BSP
17R573	Fitting, Compression, Straight, 6mm X M6
17R574	Fitting, Compression, Elbow, 6mm X M6
17R575	Fitting, Compression, Straight, 6mm X M8
17R576	Fitting, Compression, Elbow, 6mm X M8
17R577	Fitting, Compression, Straight, 6mm X M10
17R578	Fitting, Compression, Elbow, 6mm X M10
17R569	Fitting, G-Lock Push-To-Connect, Straight, 6mm X 1/4" BSP
17L545	Fitting, G-Lock Push-To-Connect, Straight, 6mm X 1/8" BSP
17L449	Fitting, G-Lock Push-To-Connect, Elbow, 6mm X 1/8" BSP
17L457	Fitting, G-Lock Push-To-Connect, Straight, 6mm X M6
17L448	Fitting, G-Lock Push-To-Connect, Elbow, 6mm X M6
17L456	Fitting, G-Lock Push-To-Connect, Straight, 6mm X M8
17L447	Fitting, G-Lock Push-To-Connect, Elbow, 6mm X M8
17L455	Fitting, G-Lock Push-To-Connect, Straight, 6mm X M10
17L446	Fitting, G-Lock Push-To-Connect, Elbow, 6mm X M10

### Weld Stud Accessories

PART NUMBER	DESCRIPTION
26A478	Kit, Stud, Weld, CSP
26A479	Kit, Plate, Weld, CSP

### Power Cables, Proximity Switch & Miscellaneous



PART NUMBER	DESCRIPTION
124333	M12 Cable, Male & Female, 4.88m
126331	Harness, Wiring, M12(F) to bare Wire, 5m (requires 124594)
124594	M12 4-Pin Male Connector for 6-8mm Cable
24Z719	Cable, M12 to 4 Pin, PNP
24Z720	Kit, M12 Cable with LED & Flying Leads, PNP (requires 124594)
17L879	Switch, Proximity Adapter M11
17L651	Plug, Doubling, CSP, M10 x 1



## ABOUT GRACO

Founded in 1926, Graco is a world leader in fluid handling systems and components. Graco products move, measure, control, dispense and apply a wide range of fluids and viscous materials used in vehicle lubrication, commercial and industrial settings.

The company's success is based on its unwavering commitment to technical excellence, world-class manufacturing and unparalleled customer service. Working closely with qualified distributors, Graco offers systems, products and technology that set the quality standard in a wide range of fluid handling solutions. Graco provides equipment for spray finishing, protective coating, paint circulation, lubrication, and dispensing sealants and adhesives, along with power application equipment for the contractor industry. Graco's ongoing investment in fluid management and control will continue to provide innovative solutions to a diverse global market.

## GRACO LOCATIONS

### MAILING ADDRESS

P.O. Box 1441  
Minneapolis, MN 55440-1441  
Tel: 612-623-6000  
Fax: 612-623-6777

### AMERICAS

#### MINNESOTA

Worldwide Headquarters  
Graco Inc.  
88-11th Avenue N.E.  
Minneapolis, MN 55413

### EUROPE

#### BELGIUM

European Headquarters  
Graco Distribution BVBA  
Industrieterrein-Oude Bunders  
Slakweidestraat 31  
3630 Maasmechelen,  
Belgium  
Tel: 32 89 770 700  
Fax: 32 89 770 777

### ASIA PACIFIC

#### AUSTRALIA

Graco Australia Pty Ltd.  
Suite 17, 2 Enterprise Drive  
Bundoora, Victoria 3083  
Australia  
Tel: 61 3 9468 8500  
Fax: 61 3 9468 8599

#### CHINA

Graco Hong Kong Ltd.  
Shanghai Representative Office  
Building 7  
1029 Zhongshan Road South  
Huangpu District  
Shanghai 200011  
The People's Republic of China  
Tel: 86 21 649 50088  
Fax: 86 21 649 50077

### INDIA

Graco Hong Kong Ltd.  
India Liaison Office  
Room 432, Augusta Point  
Regus Business Centre 53  
Golf Course Road  
Gurgaon, Haryana  
India 122001  
Tel: 91 124 435 4208  
Fax: 91 124 435 4001

### JAPAN

Graco K.K.  
1-27-12 Hayabuchi  
Tsuzuki-ku  
Yokohama City, Japan 2240025  
Tel: 81 45 593 7300  
Fax: 81 45 593 7301

### KOREA

Graco Korea Inc.  
38, Samsung 1-ro 1-gil  
Hwaseong-si, Gyeonggi-do,  
18449  
Republic of Korea  
Tel: 82 31 8015 0961  
Fax: 82 31 613 9801

All written and visual data contained in this document are based on the latest product information available at the time of publication. Graco reserves the right to make changes at any time without notice.

Graco is certified ISO 9001.



### Europe

+32 89 770 700  
FAX +32 89 770 777  
WWW.GRACO.COM