

State 06/2018

PRODUCT OVERVIEW *INDUSTRIAL LUBRICATION*

▶ Single line central lubrication systems	
▶ Gear pump units	01-1-10-04
▶ Pneumatic pump units	01-1-10-06
▶ Hydraulic pump units	01-1-10-07
▶ Manual piston pumps	
▶ Metering valves.....	01-1-10-08
▶ Metering distributor block, Metering unit 231 DV.....	01-1-10-09
▶ Manifolds	01-1-10-10
▶ Single line distributor (NV, UEN-2, GVO-1, BL-1, BL-11)	
▶ Progressive central lubrication systems	
▶ Progressive distributors	01-1-10-11
(MX-F, MX-I, LX-3, LX-4, SX-1, SX-2, SX-3, SX-5, UX, SXE-2, SXE-2R, SXE-3, SXD, SXW-1, SXW-2)	
▶ Dual line central lubrication systems	
▶ Dual line distributors (BV, BW, BX, BY, BZ, UXZ).....	01-1-10-12
▶ Components for main line controlling	
▶ Components for change-over monitoring	
▶ Piston pumps	
▶ Oil lubrication pumps	
▶ Series TDM	01-1-10-13
▶ Series A	01-1-10-14
▶ Series D	01-1-10-15
▶ Series OKG - electric drive	01-1-10-16
▶ Electromagnetic drive (K 407, K 412, K 442, K400, MP 2646)	
▶ Pneumatic drive (P2663, P2664, P2669, PAU)	01-1-10-17
▶ Hydraulic drive (HP-2122)	01-1-10-17
▶ Grease lubrication pumps	
▶ Series FK (FKR, FKP, FKG, FKG-V, FKG-S, FKG-A)	01-1-10-18
▶ Series FK and FVAM (FKGM, FKMS, FVAM) - electric drive	
▶ Series PICO - electric drive	01-1-10-19
▶ Series FK...-OC / FK...-EP - electric or rotating drive.....	01-1-10-19, 01-1-10-20
▶ Series GIGA / GIGA PLUS - electric drive	01-1-10-20
▶ Series F (F6, F-super, F-super 3)	01-1-10-21
▶ Electromagnetic drive (MP-2643)	01-1-10-22
▶ Mechanic drive (FHX-2, HAP-2535, FHX, FHX-MX)	
▶ Pneumatic drive (P-2103,FKG-PP1)	
▶ Hydraulic drive (FKGM-HP1,HP-2369, HKP-1, HPM-2, HPH-2, HPG-2)	01-1-10-23
▶ Circulating lubrication systems	
▶ Flow control valve, flow limiting device, volume flow control FXE	01-1-10-24
▶ Gear pumps	01-1-10-25
▶ Internal gear pumps	
▶ Special lubrication systems	
▶ Barrel pumps (EFP-1, BEKA Stream E, PFP-1U, HFP-3U..., Qmaxx-2, Qmaxx-1)	01-1-10-26
▶ Lubrication pinions for gears.....	01-1-10-27

Subject to alterations!

© BEKA 2018 All rights reserved!

▶ PU-lubrication pinion for gearings and chains	01-1-10-27
▶ Special units	01-1-10-28
▶ Oil-air mixing unit	01-1-10-29
▶ Oil-air mixing distributor.....	01-1-10-30
▶ Accessories	
▶ Oil reservoir	01-1-10-30

Overview

Pump units

Gear pump units



EA 1,5



BEKA Xlube

Model	Type	Delivery volume (l/min)	Oper. pressure max. (bar)	Reservoir capacity (l)	Reservoir material	Lubricant	Operating voltage
EA 1,5 oil	2727	0,4	40	3 / 6*	plastic, transparent	oil, 20 - 700 mm ² /s	400 V AC / 3~
EA 1,5 fluid grease	2728					fluid grease a/t release list	
BEKA Xlube	2712	0,25	28	1,2		oil, 20 - 700 mm ² /s or fluid grease a/t release list	230 V AC



Super 3 EA-tronic left



Super 3 EA-tronic right



Super EA-tronic with 4 l-reservoir



Super EA-tronic with 6 l-reservoir



Mini EA-tronic with 3 l-reservoir



Mini 2 EA-tronic

Model	Type	Delivery volume (l/min)	Oper. pressure max. (bar)	Reservoir capacity (l)	Reservoir material	Lubricant	Operating voltage
Super 3 EA-tronic left	2805	0,4	35	3	plastic, transparent	oil 20 - 700 mm ² /s or fluid grease acc.to release list	115 V AC 230 V AC 24 V DC
Super 3 EA-tronic right	2806						
Super EA-tronic with 4 l-reservoir	2800			4	aluminium		
Super EA-tronic with 6 l-reservoir				6	steel / plastic transparent*		
Mini EA-tronic with 3 l-reservoir				3	plastic, transparent		
Mini 2 EA-tronic	1,5			115 V AC 230 V AC			

* = on request

Subject to alterations!

© BEKA 2018 All rights reserved!

Pump units

Overview

Gear pump units



ES ES 2711 with 3 l-reservoir ES 2711 with 6 l-reservoir ES 2711 with 13 l-reservoir ES 2711 with 16 l-reservoir ES 2711 with 30 l-reservoir

Model	Type	Delivery volume (l/min)	Oper. pressure max. (bar)	Reservoir capacity (l)	Reservoir material	Lubricant	Operating voltage
ES (w/o reservoir)	2710	0,4	35	-	-	oil 20 - 700 mm ² /s or fluid grease acc. to release list	400 V AC / 3~
ES 2711 with 3 l-reservoir	2711			3	aluminium		
ES 2711 with 6 l-reservoir				6	steel / plastic transparent*		
ES 2711 with 13 l-reservoir				13	aluminium		
ES 2711 with 16 l-reservoir				16	steel		
ES 2711 with 30 l-reservoir				30	aluminium		

* = on request



EA 3 / EA 6 EA 3 / EA 6 with 3 l-reservoir EA 3 / EA 6 with 6 l-reservoir EA 3 / EA 6 with 13 l-reservoir EA 3 / EA 6 with 16 l-reservoir EA 3 / EA 6 with 30 l-reservoir

Model	Type	Delivery volume (l/min)	Oper. pressure max. (bar)	Reservoir capacity (l)	Reservoir material	Lubricant	Operating voltage
EA 3 / EA 6 (without reservoir)	2700	1 or 2	35	-	-	oil 20 - 700 mm ² /s	400 V AC / 3~
EA 3 / EA 6 with 3 l-reservoir	2705			3	aluminium		
EA 3 / EA 6 with 6 l-reservoir				6	steel / plastic transparent*		
EA 3 / EA 6 with 13 l-reservoir				13	aluminium		
EA 3 / EA 6 with 16 l-reservoir				16	steel		
EA 3 / EA 6 with 30 l-reservoir				30	aluminium		

* = on request

© BEKA 2018 All rights reserved!

Subject to alterations!

Pump units

01-1-10-05 state: 06.18EN

1090200384

Overview

Pump units

Pneumatic pump units



P30.2 to P50.8
with reservoir



2564
with 2,7 l-reservoir



P30-6
with 6 l-reservoir



P5.2 / P8.4 / P8.8
with reservoir



P5.6 / P8.6
with 6 l-reservoir

Model	Type	Delivery volume (cm ³ /stroke)	Pressure reduction	Drive press. (bar)	Reservoir capacity (l)	Reservoir material	Lubricant
P30.2 to P50.8	2564	30 or 50	1:9	5 - 10	2,5 / 4,2 / 8	plastic, transparent	oil 20 - 700 mm ² /s or fluid grease acc. to release list
2564 with 2,7 l-reservoir					2,7		
P30-6 with 6 l-reservoir					6	steel / plastic transparent*	
P5.2 / P8.4 / P8.8	2563	10 15	1:11 1:8	4 - 8	2,5 / 4,2 / 8	plastic, tr.	
P5.6 / P8.6 with 6 l-reservoir	2565				6	steel / plastic transparent*	

* = on request



P30 and P50
without reservoir



P605
without reservoir



P5.1,2 and P8.1,2
with 1,2 l-reservoir



PPF-1
with 4 l reservoir

Model	Type	Delivery volume (cm ³ /stroke)	Pressure reduction	Drive press. (bar)	Reservoir capacity (l)	Reservoir material	Lubricant
P30 and P50 (without reservoir)	2564	30 or 50	1:9	5 - 10	-	-	Oil 20 - 700 mm ² /s or fluid grease acc.to release list
P605 (without reservoir)	2566	3	1:32	3 - 8			
		9,5 15	1:12 1:8				
P5.1,2 and P8.1,2 with 1,2 l-reservoir	2562	10 15	1:11 1:8	4 - 8	1,2	plastic, transparent	
PPF-1	2161	50	1:5	6 - 10	4		

01-1-10-06 state: 06.18EN

Subject to alterations!

© BEKA 2018 All rights reserved!

Hydraulic pump units



PH1/ PH6/ PH10
without reservoir



PH1-6 / PH6-6 / PH10-6
with 6 l-reservoir

Model	Type	Delivery volume (cm ³ /stroke)	Pressure reduction	Operating press. (bar)	Relief press. (bar)	Reservoir capacity (l)	Reservoir material	Lubric.
PH1 PH6 PH10 without reservoir	2577	1	1:2	max. 55	1 - 2	-	-	oil 20 - 700 mm ² /s or fluid gre. acc.to release list
		6	1:1					
		10						
PH1-6 PH6-6 PH10-6 with 6 l-reservoir	2578	1	1:2					
		6	1:1					
		10						
						6	steel / plastic transp.*	

* = on request

Manual piston pumps



HAP-2532



HAP-2533

Model	Type	Delivery volume (cm ³ /stroke)	Operating press. (bar)	Reservoir capacity (l)	Reservoir material	Lubricant
HAP-2532	2532	6 / 10 / 15	30	1,2	plastic, transparent	oil, 20 - 700 mm ² /s or fluid grease acc.to release list
HAP-2533	2533	6 / 10				

Overview

Metering valves

Metering valves (static system)



Z31DV..

with threaded connection



Z31DV..

with plug connection



Z31DV..

with elbow plug connection

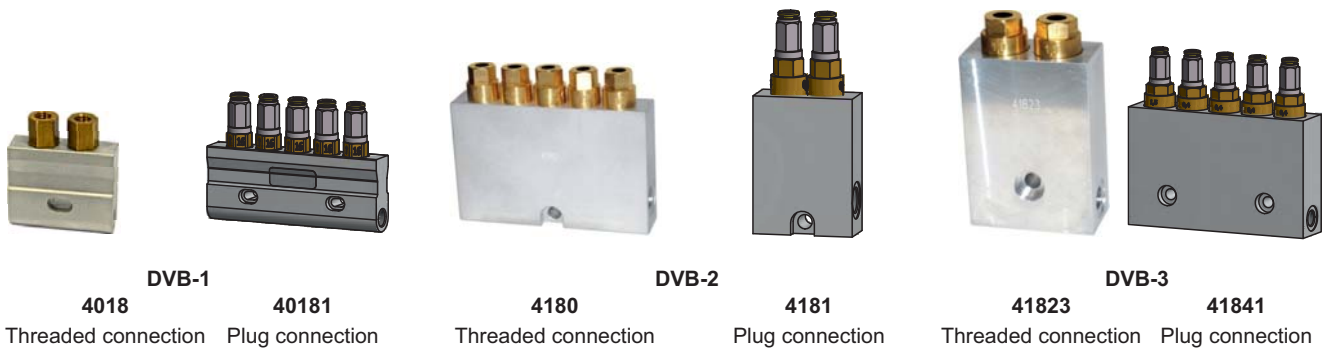
Model	Metering volume (mm ³ /stroke)	Type	Connection type	Relief press. max. (bar)	Operating press. (bar)	Material	Metering medium
Z31DV3	30	4031	- threaded connection	4	15 - 40	steel / V2A (1.4305)	oil 20 - 700 mm ² /s or fluid grease acc.to release list
Z31DV5	50		- plug-type conn.				
Z31DV10	100		- for polyamide pipes				
Z31DV15	150		- elbow plug-type conn.				
Z31DV20	200		- for polyamide pipes				

01-1-10-08 state: 06.18EN

Subject to alterations!

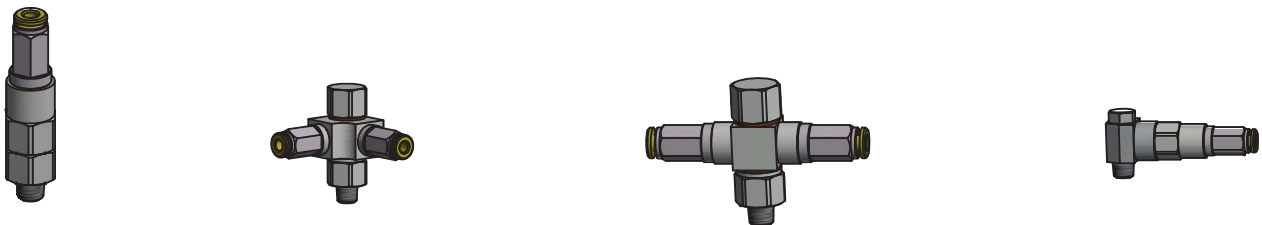
© BEKA 2018 All rights reserved!

Metering distributor blocks DVB



Model	Meter.- volume (mm ³ /stroke)	Type Connection type	Number of lube points	Connections		Relief press. max. (bar)	Operating press. (bar)	Metering medium
				main line	lube line			
DVB-1	10	Threaded connection	1 to 10	M10x1	M8x1 pipe Ø 4 mm	3	15 - 40	oil 10 - 1000 mm ² /s or fluid grease acc.to release list
	20							
	30							
	60							
	100							
	160							
DVB-2	100	Threaded connection	1 to 3	M12x1 or G 1/8	M8x1 pipe Ø 4 mm	4	16 - 50	oil 10 - 1000 mm ² /s or fluid grease acc.to release list
	200	Threaded connection						
	300	Plug-type connection						
	400							
	600							
DVB-3	200	Threaded connection	1 to 3	M12x1 or G 1/8	M8x1 pipe Ø 4 mm	4	16 - 50	oil 10 - 1000 mm ² /s or fluid grease acc.to release list
	400	Threaded connection						
	600	Plug-type connection						
	1000							
	1500							

Metering units 231-DV for direct lubrication point connection (static system)



Design	Version	Meter. volume (mm ³ /stroke)	Type	Connection type	Relief press. (bar)	Operating press. (bar)	Metering medium
A	G	30	4176	Bolted connection	max. 1	max. 35	oil 40 - 250 mm ² /s fluid grease acc.release list
B	L	60					
C	T	100					
D	W						

Overview

Metering elements

Manifolds



Size 1
Z32VL3 or Z33VL6



Size 1
Z32VL4 or Z33VL8



Size 1
Z32VL5 or Z33VL10

Size	Model	Outlets	Number of outlets	Type	Connection inlets	Connection outlets	Material
1	Z32VL1 - Z32VL12	one-sided	1 to 12	4020	with or without union nut (M10x1, pipe-Ø 6, with olive)	M8x1	steel* / 1.4305
	Z33VL2 - Z33VL24	two-sided	2x1 to 2x12			M10x1	
2	Z32VL1/2 - Z32VL10/2	one-sided	1 to 10			M10x1	steel*
	Z33VL2/2 - Z33VL20/2	two-sided	2x1 to 2x10				

* corrosion protection category corresponds to a protection period of up to 720 h red rust resistance

Single line distributors



NV



UEN-2



GVO-1



BL-1 2-fold



BL-11

Model	Type	Operating pressure max. (bar)	Number of outlets	Connection inlet	Connection outlet	Material	Metering volume optional (mm ³ / stroke and outlet)	Metering medium
NV	4020	45	1 to 6*	M16x1,5	M8x1	Housing: Zn diecasting additional part: brass	100 - 1000	oils; fluid grease NLGI-cl. 000, 00
UEN-2	4132	300	1 to 8	G 1/4	M10x1	aluminium	50 - 400	fluid grease; grease up to NLGI-cl. 2
GVO-1	4126	70	1 to 15	M10x1	pipe Ø 4	steel **	16 - 50	oil; fluid grease NLGI-cl. 000, 00
				1/8-27 NPTF	pipe Ø 1/8"			
BL-1	4125	240	1 to 6	3/8-18 NPT	1/8-27 NPT		200 - 1200 adjustable	fluid grease, grease up to NLGI-cl. 2
BL-11			1	1/2-14 NPTF	1/4-18 NPTF		1000 - 11000 adjustable	

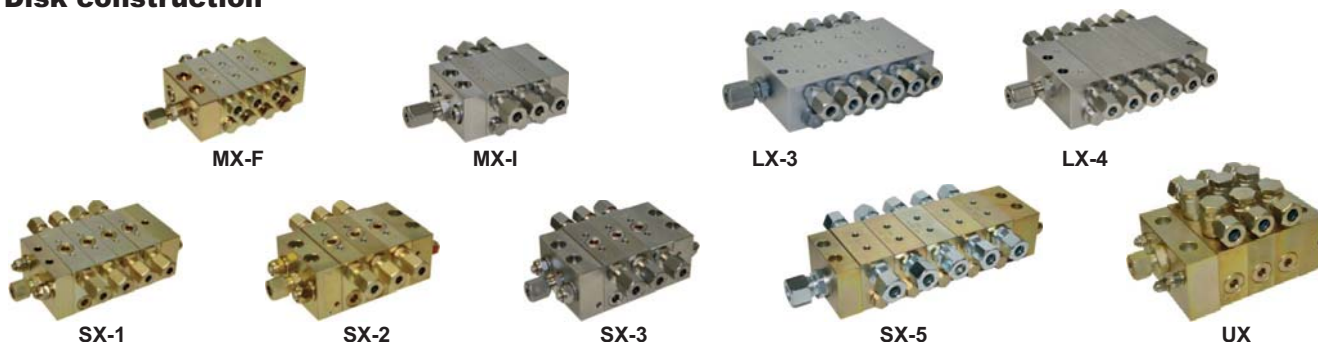
* no. of outlets can be increased by a connector

** corrosion protection category corresponds to a protection period of up to 720 h red rust resistance

Subject to alterations!

© BEKA 2018 All rights reserved!

Disk construction



Mod.	Type	Max. no of revolutions (rpm)	Oper. press. max. (bar)	No. of outlets max.	Connection inlet	Connection outlets	Material	Metering volume optional (mm ³ / stroke and outlet)	Metering medium		
MX-F	4010	180	300	24	M10x1	M10x1	steel*	25 - 105	oils and greases up to NLGI-cl. 2		
MX-I	3979	60		16			1.4404	45 - 105			
LX-3	3973	60		20			G 1/8	G 1/8		1.4404 / 1.4401	200
LX-4	3950	180								steel*	50 - 200
SX-1	4000	180	250	G 3/8	G 1/4	steel*	68 - 430	75 - 470			
SX-2	3989					1.4301					
SX-3	4008	60	250	G 1/2	G 3/8	steel*	1130 - 2000				
SX-5	3983	180									
UX	4005										

* corrosion protection category corresponds to a protection period of up to 720 h red rust resistance

Segment construction



Sandwich construction



SXE-2 / SXE-2R (with return)

SXE-3

SXD

SXW-1

SXW-2

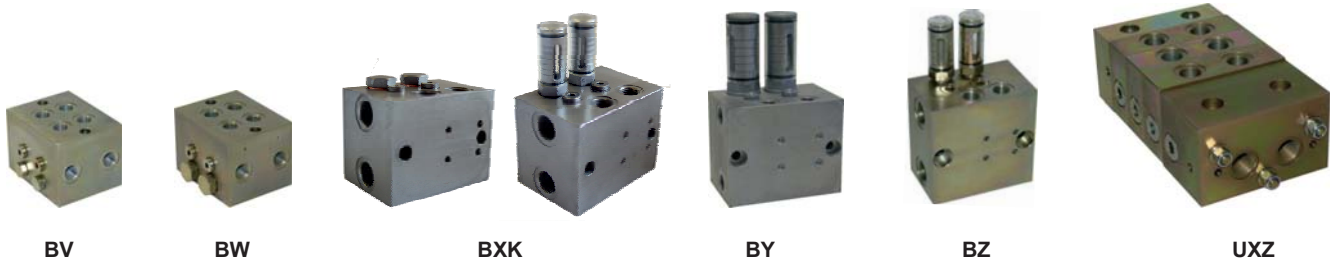
Model	Type	No. of revol. max. (rpm)	Oper. press. max. (bar)	No. of outlets max.	Connection inlet	Connection outlets	Material	Metering vol. optional (mm ³ / stroke and outlet)	Metering medium
SXE-2	4003	180	300	20	G 1/4	G 1/8	steel*	100 - 760	oils and greases up to NGLI-cl. 2
SXE-2R	3971					M11x1			
SXE-3	3985		200		G 3/8	G 1/4			
SXD	3998				G 3/8				
SXW-1	3977	150	150	G 1/4	G 1/4	steel*	100 - 900	900 - 3700	
SXW-2	3978			G 1/2	G 3/8	connec. plate, aluminium			

* corrosion protection category corresponds to a protection period of up to 720 h red rust resistance

Overview

Dual line components

Dual line distributors

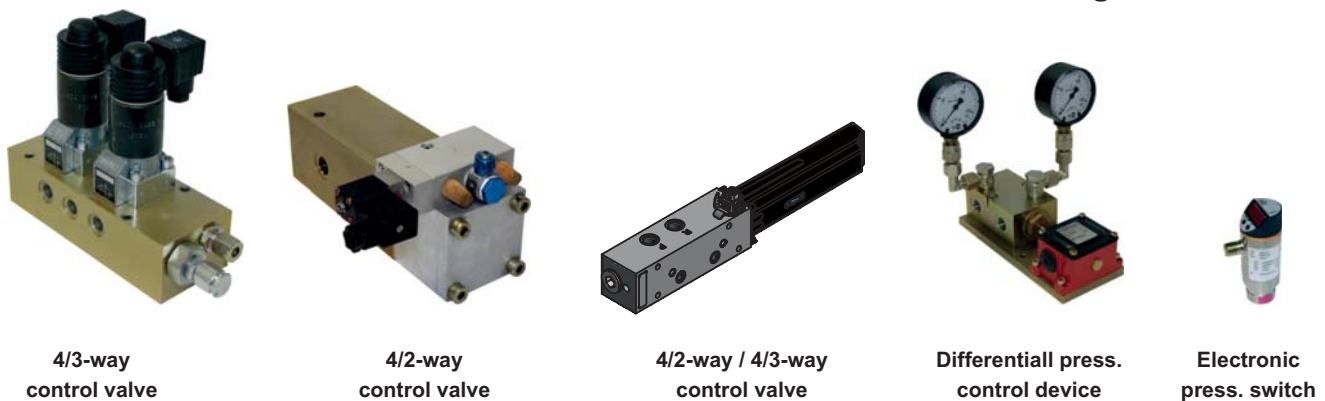


Model	Type	Operating pressure max. (bar)	No. of outlets max.	Connection inlets	Connection outlets	Material	Metering volume optional (mm ³ / stroke and outlet)	Metering medium
BV	3981	400 (min. 35)	8	G 1/4	G 1/4	steel *	70 - 300	oils, fluid grease, grease up to NLGI-cl. 3
BW	3980					300 - 1500		
BXK	3962					200 - 1500 (adjustable)		
BY	4236		4	G 3/8		steel* / 1.4305	1000 - 15000 (adjustable)	
BZ	4001		8			steel* / 1.4305 / 1.4404	250 - 3000 (adjustable)	
UXZ	4006	250	20	G 3/8	steel*	1130 - 2000	NLGI-cl. 2	

* corrosion protection category corresponds to a protection period of up to 720 h red rust resistance

For changeover of the main lines

For monitoring changeover



Component	Type	Actuation	Operating pressure (bar)	Flow volume (l/min)	Connection main line	Material	Lubricant
4/3-way control valve	4340	electric	400	8	G 1/2 G 3/4	GG-25	oils and greases up to NLGI-cl. 2
4/2-way control valve	4065	electro-pneumatic	350	20	G 3/8	steel* / Al	
4/2-way control valve	SVE-2	electric	400	24	G 1/2	steel	
4/3-way control valve	SVE-3						
Differential pressure control device	4305	electric	400	-	G 3/8	steel*	
Electron. press. switch	0421					-	

* corrosion protection category corresponds to a protection period of up to 720 h red rust resistance

Subject to alterations!

© BEKA 2018 All rights reserved!

Series TDM - drive see table



TDM-FSU

TDM-FS 4

Model drive	Type	No. of outlets	Delivery volume adjustable, max. (cm ³ / stroke and outlet)	Reduction	Drive speed max. (rev / min)	Operating pressure max. (bar)	Suction height max. (mm)
TDM-FSU rotating	2200	1 - 2	0-1	33	300 - 1800	3	300
TDM-FSU-M electric	2201						
TDM-FS 4 rotating	2204	3 - 4					
TDM-FS 4-M electric	2205						



TDM 2



TDM 4



TDM 8



TDM 4-M
230/400 V AC / 3~

Model	Type	No. of outlets	Delivery volume adjustable, max. (cm ³ / stroke and outlet)	Reduction	Drive speed max. (r.p.m.)	Operating pressure max. (bar)	Suction height max. (mm)	
TDM 2 rotating	2210	1 - 2	0,039 - 0,088	71,5:1 - 428:1	500 - 3000	3 / 5	300	
TDM 2-M electric	2211							
TDM 4 rotating	2212	3 - 4						
TDM 4-M electric	2213							
TDM 8 rotating	2214	5 - 8						92:1 - 1050:1
TDM 8-M electric	2215							
TDM-M with motor	Power consumption: 0,09 / 0,11 kW; available for all pumps of series TDM, see TDM-FSU-M, TDM-FS 4-M, TDM 2-M, TDM 4-M, TDM 8-M							

1090200384

Overview

Oil lubrication pumps

Series A - drive see table



AZU



AZUL



AZP



AF



AFL



AFG



AFG-M (400 V AC / 3~)



APG-M (DC)

Model drive	Type	No of outlets max.	Delivery volume adjustable, max. (cm ³ / stroke and outlet)	Reduction	Drive speed max. (r.p.m.)	Operating pressure max. (bar)	Suction height max. (mm)
AZU rotating	2240	12	0,06	8,25:1 / 16,66:1 25:1 / 50:1	200 / 400 / 600 / 1300	10	500
AZUL rotating	2238					5	
AZP oscillating	2242			1:1	40	10	
AF rotating	2244			17,5:1 / 25:1 / 35:1	500 / 600 / 1400	5	
AFL rotating	2239			8,75:1 / 17,5:1 / 25:1 / 35:1	200 / 500 / 600 / 1000	10	
AFG rotating	2248			80:1 / 160:1 / 320:1 / 640:1	2400 2800	10	
AFG-M electric	2250			50:1 / 80:1 / 160:1 / 320:1 / 640:1	1500 / 1800		
APG-M electric	2243			400:1 / 288:1	2900 / 3000		

01-1-10-14 state: 06.18EN

Subject to alterations!

© BEKA 2018 All rights reserved!

Series D - drive see table



Model drive	Type	Outlets max.	Delivery volume adjustable, max. (cm ³ / stroke and outlet)	Reduction	Input speed max. (U / min)	Operating pressure max. (bar)	Suction height max. (mm)
DU rotating	2260	12	0,15	12:1 / 18:1 / 36:1	500 - 750	50	1000
DP oscillating	2262			2:1	80		
DG rotating	2266			80:1 / 160:1 / 320:1 / 640:1	2500		
DFG rotating	2268			160:1 / 320:1 / 640:1	2500		
DFG-M electric	2270			80:1 / 160:1 / 320:1 / 640:1	Power demand 0,25 kW		

Overview

Oil lubrication pumps

Series OKG - electric drive



OKGGM-OC
DC



OKGGM-OC
with PSU,
115 or 230 V AC



OKGM-OC
400 V AC / 3~



OKGGM-EP
DC



OKGGM-EP
with PSU,
115 or 230 V AC



OKGM-EP
400 V AC / 3~

Model	Type	Out-lets max.	Delivery volume max. (cm ³ / stroke and outlet)	Reser. content (kg)	Reduction	Input speed motor / shaft (rpm)	Pump speed 1 rev. = 1 stroke (rpm)	Press. max. (bar)	Operating voltage
OKGGM-OC	2035	21	0,005 0,010 0,015 0,025 0,050	2,5 4,2 8,0	-	-	15	200	12 V DC
OKGGM-OC with PSU	2029								24 V DC
OKGM-OC	2017								115 V AC 230 V AC
OKGGM-EP	2040	3	0,06 0,12 0,17		-	-	15	350**	12 V DC
OKGGM-EP with PSU	2038								24 V DC
OKGM-EP	2011	6			(80:1)* / 150:1 / 300:1 / 400:1 / 600:1 / 1200:1	1350 at 50 Hz 1600 at 60 Hz	-		115 V AC 230 V AC 400 V AC / 3~

* Special request after consultation

** Pressure limiting valve adjusted to 280 bar, PSU= power supply unit

Electro magnetic drive



K-407



K-412



K-442



K-400 or MP-2646

Model	Type	Outlets	Delivery volume max. (cm ³ / stroke and outlet)	Reservoir capacity (l)	Reservoir material	Duty ratio	Operating voltage
K-407	2652	1 - 6	0,040 0,100	0,75	plastic	40 %	24 V DC
K-412	2653			1,2			
K-442	2640			4,2	plastic, transparent		
K-400	2654			without reservoir			
	2641				25 %		
MP-2646	2646					24 V DC 180 V DC	

Subject to alterations!

© BEKA 2018 All rights reserved!

Pneumatic drive



P-2663



P-2669

Model	Type	Outlets max.	Delivery volume max. (cm ³ / stroke and outlet)	Reservoir capacity (l)	Reservoir material	Pressure ratio	Drive press. (bar)
P-2663	2663	5	0,025	0,5	plastic	1:20	6 - 10
P-2664	2664		0,010	1,2			
P-2669	2669		0,010	0,5			
PAU	2685	1	10	-	-	1:20	

Hydraulic drive



HP-2122

Model	Type	Outlets max.	Delivery volume max. (cm ³ /stroke and outlet)	Operating pressure max. (bar)	Drive pressure (bar)
HP-2122	2122	10	2 / 3 / 4,5 / 6 / 7,5	200	60 - 200

Overview

Grease lubrication pumps

Series FK - drive see table



FKR
rotating



FKP
oscillating



FKG
rotating
vertical



FKG-V
rotating
pivotable by 90°



FKG-S
rotating
vertical



FKG-A
rotating
vertical

Model	Type	Outlets max.	Delivery volume adjustable, max. (cm ³ / stroke and outlet)	Reser. capacity (kg)	Reduction	Input speed (rev / min)	Press. max. (bar)
FKR rotating	2000	12	0,1	1 1,5 2 4	14:1 / 19:1 / 28:1 / 57:1	min.: 28/38/56/114 max.: 210/300/430/850	50
FKP oscillating	2001				3,5:1	35	
FKG rotating vertical	2002				84:1 / 150:1 / 300:1 / 400:1 / 600:1 / 1200:1	300 - 2800	
FKG-V rotating pivotable by 90°	2004				84:1 / 150:1 / 300:1 / 400:1 / 600:1 / 1200:1		
FKG-S rotating vertical	2005				300:1 / 450:1 / 900:1		
FKG-A rotating vertical	2006				8	300:1 / 450:1 / 900:1	

Series FK and FVAM - electric drive



FKGM
with motor



FKMS
with motor



FVAM
with motor

Model	Type	Out-lets max.	Delivery volume adjustable, max. (cm ³ /h and outlet)	Reservoir capacity (kg)	Reduction	Input speed (rev / min)	Operating press. max. (bar)	Operating voltage
FKGM with motor	2007	12	0,1	1	84:1 / 150:1 / 300:1 / 400:1 / 600:1 / 1200:1	1420	50	230 / 400 V AC / 3~
FKMS with motor	2008			2 4		1700		400 V AC / 3~
FVAM with motor	2030	8	0,15	1 / 1,5 / 2 / 4 / 10	420:1 / 560:1 / 750:1	at 60 Hz	100	230 / 400 V AC / 3~

Subject to alterations!

© BEKA 2018 All rights reserved!

PICO - electric drive



Model	Type	Out-lets max.	Deliv. volume max. (cm ³ / stroke and outlet)	Reservoir capacity (kg)	System type	Pump speed 1 rev. = 1 stroke (rpm)	Operating press. max. (bar)	Operating voltage
PICO	2185	8	0,005 / 0,010 / 0,015 / 0,025 / 0,05	1,2	multi line	15	200	12 V DC 24 V DC
		2	0,12		progressive		280	

Series FK...-OC / FK...-EP - Drive electric or rotating



FKGGM-OC
DC

FKGGM-OC
with PSU,
115 or 230 V AC

FKGM-OC
AC / 3~

FKGGM-EP
DC

FKGGM-EP
with PSU,
115 or 230 V AC

FKGGM-EPC
with control,
100 to 250 V AC

Model	Type	Max. outlets	Max. delivery volume (cm ³ / stroke and outlet)	Res. capacity (kg)	Reduction	Drive speed motor / shaft (r.p.m.)	Pump speed 1 rev. = 1 stroke (r.p.m.)	Max. press. (bar)	Operating voltage
FKGGM-OC	2154	21	0,005 0,010 0,015 0,025 0,050	1,9 2,5 4,2 8,0	-	-	15	200	12 V DC 24 V DC
FKGGM-OC with PSU	2024								115 V AC 230 V AC
FKGM-OC	2016 N								AC / 3~
FKGGM-EP	2018	3	0,06 - 0,17		-	-	15	350 **	12 V DC 24 V DC
FKGGM-EP with PSU	2037								115 V AC 230 V AC
FKGGM-EPC with control	2036								100 V to 250 V AC

** Pressure limiting valve adjusted to 280 bar

Overview

Grease lubrication pumps

Series FK...-OC / FK...-EP - Drive electric or rotating (continuation)



FKGM-EP
AC / 3~



FKGM-EP
with norm motor,
400 V AC / 3~



FKG-EP
rotating, with flange 56 C
acc. to NEMA (USA)



FKR-EP
rotating

Model	Type	Max. outlets	Max. delivery volume (cm ³ / stroke and outlet)	Res. capacity (kg)	Reduction	Drive speed motor / shaft (r.p.m.)	Pump speed 1 rev. = 1 stroke (r.p.m.)	Max. press. (bar)	Operating voltage
FKGM-EP	2013 N	6	0,06 - 0,17	1,9 / 2,5 / 4,2 / 8,0	(80:1)* / 150:1 / 300:1 / 400:1 / 600:1 / 1200:1	1500 at 50 Hz 1800 at 60 Hz	-	350**	AC / 3~
FKGM-EP with standard motor	2014	8		1,9 2,5 4,2 8,0		1500 at 50 Hz 1800 at 60 Hz			400 V AC / 3~
FKG-EP with flange 56 C acc. to NEMA rotating				2015		7	(2 / 4 steel)		-
FKR-EP rotating	14:1 / 19:1 / 28:1 / 57:1								

* special requests after consultation ** Pressure limiting valve adjusted to 280 bar

Series GIGA / GIGA PLUS - Electric drive



GIGA PLUS (DC/AC)
4 l reservoir
without control



GIGA PLUS (DC/AC)
8 l reservoir
GIGA-tronic control



GIGA PLUS (DC/AC)
16 l reservoir
GIGA-multitronic control

Model	Type	max. outlets	max. delivery volume (cm ³ / stroke and outlet)	Reserv. content (l)	System	Control	Pump speed 1 rev. = 1 stroke (r.p.m.)	max. press. (bar)	Operating voltage
GIGA	2172A	3	0,12 / 0,25	4	progressive	without	17	300 *	12 V DC 24 V DC 100 V to 250 V AC
GIGA PLUS	2172P		8	0,25		16			
	2172S		sectional		GIGA-multitronic				
	2172E				w/o				
	2172Z				dual line				

* Pressure limiting valve adjusted to 280 bar

Subject to alterations!

© BEKA 2018 All rights reserved!

Series F - drive see table



F6 rotating
 F6 with geared motor
 F-super with geared motor
 F-super rotating
 F-super 3 with geared motor
 F-super 3 rotating

Model	Type	Out-lets max.	Delivery volume max. (cm ³ / stroke and outlet)	Reserv. content (kg)	Reduction	Input speed motor / shaft (rpm)	Pump speed 1 rev. = 1 stroke (rpm)	Press. max. (bar)	Operating voltage
F6 rotating	2032	20	0,06 - 0,17	5 7,5 10	9:1 / 18:1 / 25:1 / 36:1 / 50:1	-	min. 1 max. 25	250*	230 / 400 V AC / 3~
F6 w. geared motor	2034				135:1 / 270:1 / 375:1 / 450:1 / 540:1 / 600:1 / 750:1 / 900:1 / 1250:1/1800:1/ 2500:1	2800 at 50 Hz 3300 at 60 Hz	-		
F-super w. geared motor	2050				88:1 / 165:1 / 280:1 / 410:1 / 600:1 / 800:1 / 1000:1	1420 at 50 Hz 1700 at 60 Hz	-		
F-super rotating	2051	21	0,06 - 0,17	5 10	15:1 / 22,5:1 / 45:1	-	min. 1 max. 25	350**	-
oscillating	2052				2,5:1	-	-		
F-super 3 w. geared motor	2053	3 (4= special version)	0,56	48 65 100	46:1	1420 at 50 Hz 1700 at 60 Hz	-	400	230 / 400 V AC / 3~
F-super 3 rotating	2054				15:1 / 22,5:1 / 45:1	-	min. 1 max. 25		
oscillating	2055				2,5:1	-	-		

* pressure limiting valve adjusted to 250 bar, ** pressure limiting valve adjusted to 280 bar

1090200384

Overview

Grease lubrication pumps

Electro-magnetic drive



Model	Type	Outlets max.	Delivery volume max. (cm ³ / stroke and outlet)	Reservoir capacity (l)	Reservoir material	Duty ratio	Operating voltage
MP-2643	2643	1 - 6	0,015 / 0,025 / 0,035	0,4	plastic, transparent	25 %	24 V DC

Mechanic drive



FHX-2



HAP-2535



FHX



FHX-MX

Model	Type	Outlets	Delivery volume max. (cm ³ / stroke)	Reserv. content (l)	Reservoir material	Pressure max. (bar)
FHX-2	2534	1	1,5	1,2	plastic, transparent	300
			3			150
HAP-2535	2535	1	1,5	1 / 1,5 / 2 / 3 / 4 (kg)	steel	300
			3			150
FHX	2081	1	2	0,4 (kg)	cartridge	400
FHX-MX (w. progre. distributor MX-F)						300

Pneumatic drive



P2103



FKG - PP-1

* pressure limiting valve adjusted to 280 bar

** at drive pressure 8 bar

Model	Type	Outlets max.	Delivery volume max. (cm ³ / stroke and outlet)	Reservoir content (kg)	Reservoir material	Drive	Operating pressure	Drive pressure (bar)
P-2103	2103	1	2	1,2	plastic, transparent	1:32	250**	4 - 8
			4					
			6	1 / 1,5 / 2 / 3 / 4	steel	1:10	80**	
FKG-PP-1	2153	3	0,06 - 0,17	1,9 / 2,5 / 4,2 / 8	plastic, transparent	-	350*	6 - 10
				2 / 4	steel			

Subject to alterations!

© BEKA 2018 All rights reserved!

Hydraulic drive



FKGM-HP1		HP-2369		HKP-1		HPM-2		HPH-2		HPG-2	
Model	Type	Out-lets	Delivery vol. (cm ³ /stroke and outlet)	Reservoir capacity (kg)	Reservoir material	Operating press. max. (bar)	Drive pressure (bar)				
FKGM-HP1	2163	1 - 6	0,06 - 0,17	1,9 / 2,5 / 4 / 8	plastic, transparent	350*	30** - 250				
				2 / 4	steel						
HP-2369	2104	1	1 / 2 / 3 / 4 / 6	1,2	plastic, transparent	280*	25 - 160				
				1 / 1,5 / 2 / 3 / 4	steel						
HKP-1	2120	2	1	2,5	plastic, transparent	(min. 60) - 250	85 - 275				
HPM-2	2574	1	0,2 - 2,0	0,4	cartridge	100 - 220	130 - 250				
HPH-2	2574		0,1 - 1,0			250 - 350	from 100				
HPG-2	2581	max. 20	max. 0,27***	0,35 / 0,4 / 0,5		365	70 - 400				

* pressure limiting valve adjusted to 280 bar

** min. drive pressure depends on counterpressure of lubrication system

*** total volume of the pump per stroke

Overview

Accessories

Flow control valve



Type	Operating pressure (bar)	Pressure drop (bar)	Volume flow (l/min)	Material	Weight (kg)	Lubricant
4060	10 - 250	7	0,1 - 8	steel	1,65	oils 10 - 1000 mm ² /s

Flow limiting device



Type	Operating pressure (bar)	Pressure drop (bar)	Volume flow (l/min)	Material	Weight (kg)	Lubricant
4365	5 - 200 (without add-ons)	≥ 5	1,15 - 3,00 (dep. on orifice disc-Ø)	steel	0,39	oils ON synt. a. mineral. basis 20 - 600 mm ² /s

Volume flow control



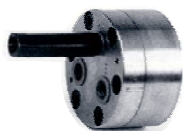
Model	Type	Oper. pressure max. (bar)	Volume flow (l/min)	Measuring volume (cm ³)	Material	Weight (kg)	Lubricant
FXE 250 with conn. plate	4063	250	0,05 - 12	1,2	steel (cover Al)	0,7 + 0,85	Oils 20 - 1000 mm ² /s
without conn. plate	4064						

01-1-10-24 state: 06.18EN

Subject to alterations!

© BEKA 2018 All rights reserved!

Gear pumps



Flange pumps



Foot pump



Motor pumps
horizontal



Motor pumps
vertical

Series	Pump type	Delivery volume (l/min)	Operating pressure max. (bar)
FL 0,5	flange pumps	0,06 - 3,00	35
MZ 0,5	motor pumps, horizontal		
MZE 0,5	motor pumps, vertical		
FL 0	flange pumps	0,25 - 2,40	50
MZ 0	motor pumps, vertical		
FL 1 to 5	flange pumps	1 - 65	30
U 1 to 5	foot pumps		
MZN 1 to 5	motor pumps, horizontal		
MZE 1 to 5	motor pumps, vertical		

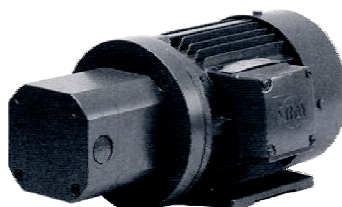
Internal gear pumps



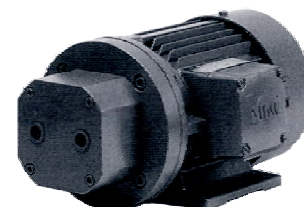
FLI and UI



FLIS and UIS



MZIR

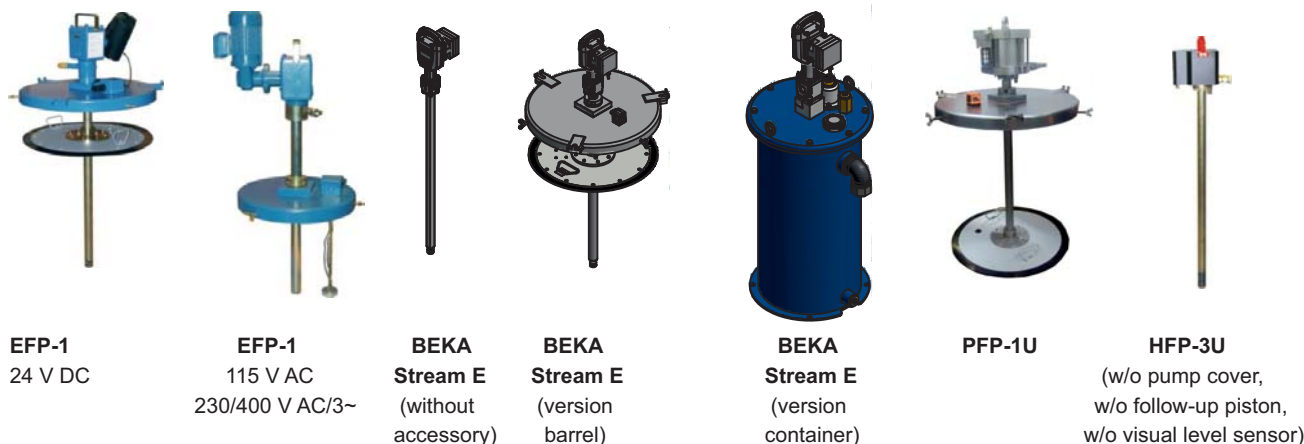


MZI

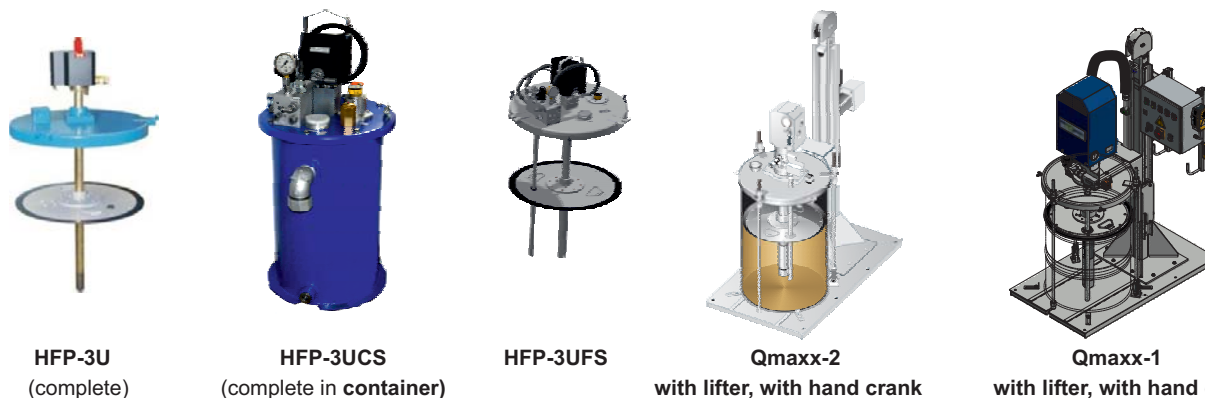
Series	Pump type	Delivery volume (l/min)	Operating pressure max. (bar)
FLI and UI Connections radial	Flange and foot pumps	4 - 32	100
FLIS and UIS Connections at front			
MZIR Connections radial	Motor pumps		
MZI Connections at front			

Overview

Barrel pumps



Model	Type	Drive	Delivery vol. max. (cm ³ / stroke)	Barrel size	Operating voltage	Drive pressure (bar) / -volume (l / min)	Operation-press. max. (bar)
EFP-1	2196	electrical	0,33	20 / 25 / 50 / 200 kg	24 V DC	-	300*
	2197				115 V AC 230/400 V AC/3~	-	
BEKA Stream E w/o accessory	2520	electrical	120 (cm ³ / min)	barrel 213 l container 41 / 54 / 68 l	24 V DC	-	350
BEKA Stream E version barrel or container	2521						
PFP-1U	2690	pneumatic	26	20 / 25 / 50 / 200 kg	-	4 - 6 / max. 134	300*
HFP-3U with or without: pump cover, follow-up piston, visual lev. sensor	2198	hydraulic	26	20 / 25 / 50 / 200 kg	-	35 up to 60 / 0,75 up to 4,5	350**
HFP-3UCS	2395	hydraulic	26 (double stroke)	41 / 54 / 68 liter	-	26 up to 55 / 6,5 max.	275
HFP-3UFS	2395F			213 liter			
Qmaxx-2	2179	hydraulic	9000 (cm ³ / min)	200 kg	-	max. 100 / max. 40	100
Qmaxx-1	2187	electrical	9000 (cm ³ / min)		400/500 V AC/3~	-	



* pressure limiting valve set to max. 280 bar
 ** pressure limiting valve set to max. 300 bar
 Subject to alterations!

**Segmented
lubrication pin.
for gears**



**Lubrication pinion
for gears**



**PU-lube pinion
for gears**



**PU-lube pinion
for chains**



Lubrication pinion

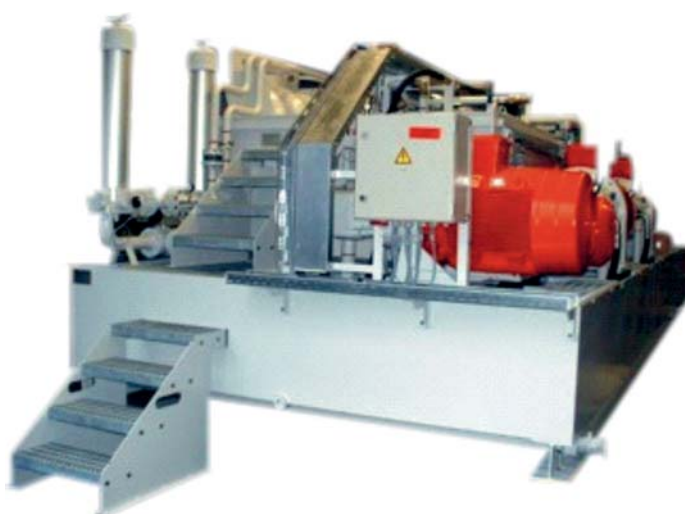
	Segmented lubrication pinion for gears	Lubrication pinion for gears	PU-lube pinion for gears	PU-lube pinion for chains
Material lubrication pinion	Aluminium, plastic	Aluminium	Polyurethane-foam open celled	Polyurethane-foam open celled
	retainer, shaft: steel	retainer, shaft: steel	axis: steel galvanized or stainless steel	axis: steel galvanized or stainless steel
Lubricant	grease up to NLGI 2	grease up to NLGI 2	oils and greases up to NLGI 2	oils and greases up to NLGI 2
Operating temperature	-20 to +70 °C	-20 to +70 °C	-30 to +150 °C	-30 to +150 °C
Version	segmented	one part two parts three parts four parts	gears: straight sloping right sloping left	Simplex Duplex Triplex

01-1-10-27 state: 06.18 EN

Overview

BEKA manufactures lubrication- and hydraulic units according to customer's request. Planning and construction are done according to the customer's specifications.

Special units



01-1-10-28 state: 06.18EN

Pictures are exemplary

Subject to alterations!

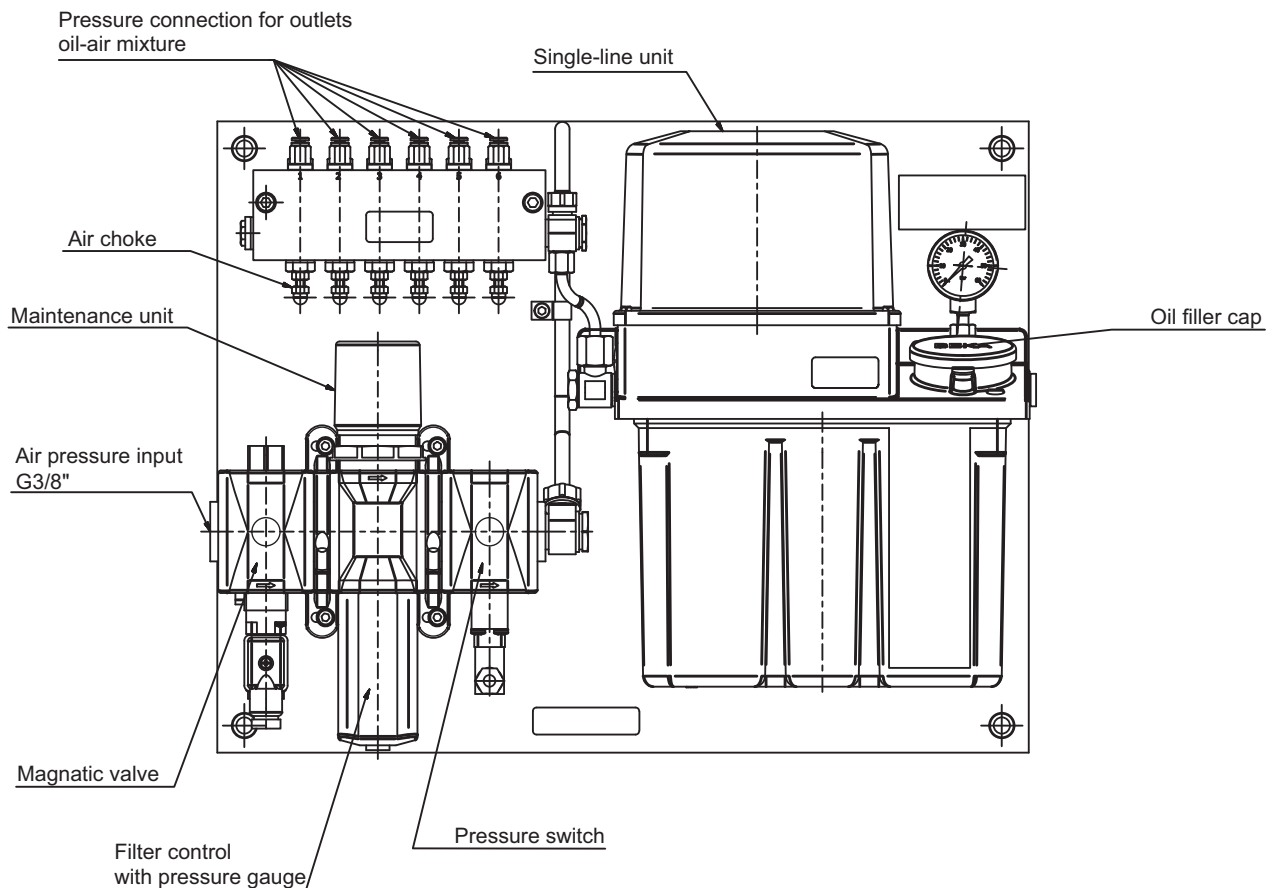
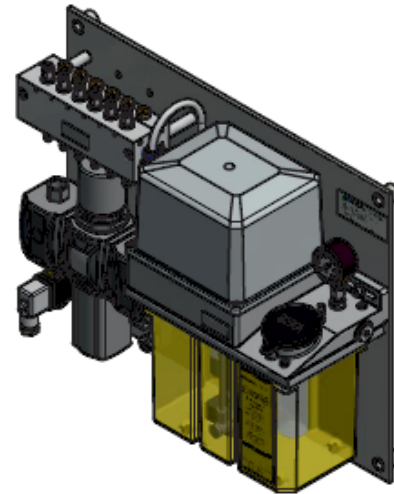
© BEKA 2018 All rights reserved!

Oil-air-mixing unit type: 6010

The unit is a combination consisting of a single-line unit, an oil-air-mixing distributor and a maintenance unit. For example the unit lubricates spindle bearings in machine tools.

A delivery with level monitoring and control is possible, available operating voltages: 24V DC, 110VAC or 230VAC.

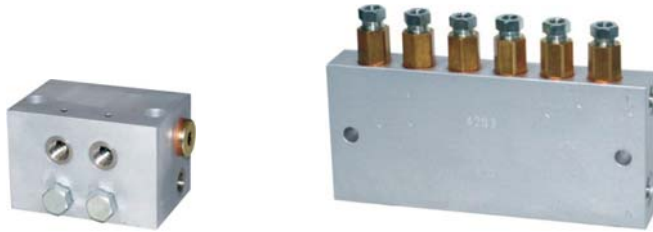
Number of possible outlets: 1 to 6 pluggable (Ø4 or Ø6 mm), the metering volumes per outlet can be configured differently.



Overview

Oil - air mixing distributor, reservoir

Oil - air mixing distributor MV



MV-4089

MV-4283

Drawing	Type	No. of lubrication points	Metering volume (mm ³ / stroke)	Operating press. (bar)		Connection for lubricant	Connection for spray air	Press. connection oil/air mixture
				lubricant	spray air			
MV-4299	4299	2 / 4 / 6 / 8	10 / 20 / 30 / 50	10 - 50	3 - 6	M10x1	M10x1	pipe Ø 4 (plug-type conn.)
MV-4089	4089	1 - 6	30 / 60 / 100 / 160	10 - 50	1 - 10	G 1/8	G 1/4	pipe Ø 4 or Ø 6 (threaded and plug-type connect.)
MV-4092	4092	2 - 5	30 / 60 / 100	12 - 50	4 - 8	M10x1	G 1/4	M10x1
MV-4283	4283	2 - 10	50	max. 50	1 - 5	M10x1	M10x1	pipe Ø 2,5 or Ø 4

Oil reservoir



FAZ03455_00

FAZ01918_03

FAZ03433_02

AZ301371

FAZ03433_00

FAZ03532_00

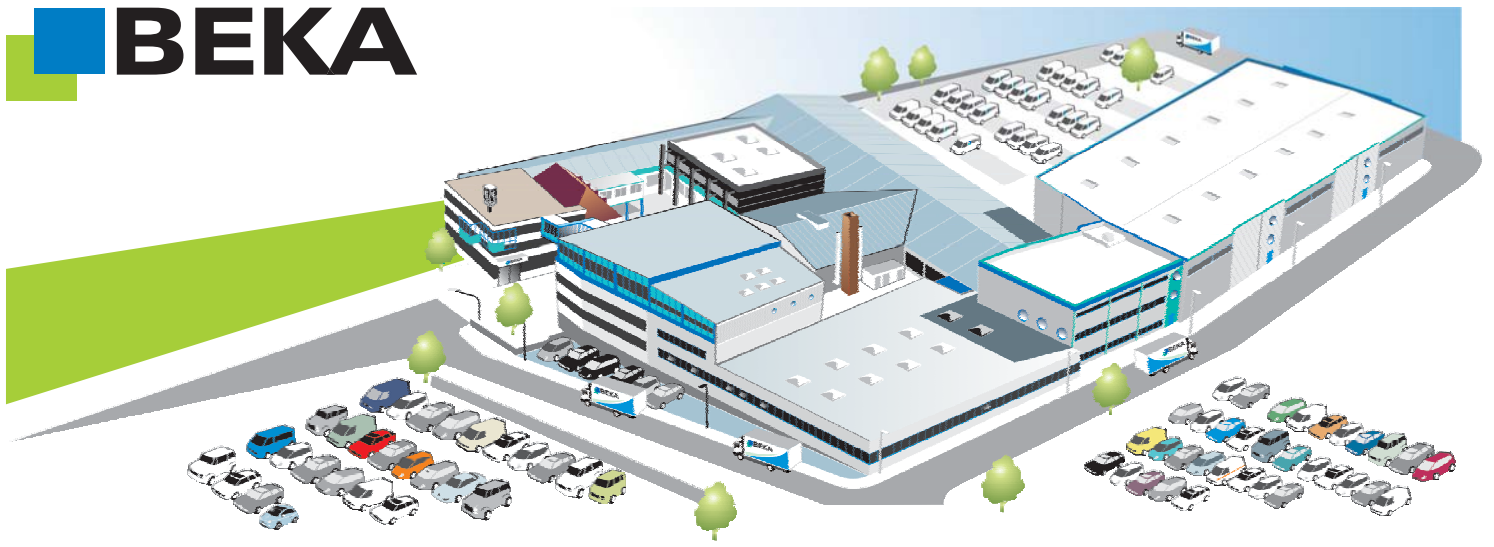
Model	Type	Reservoir capacity (l)	Reservoir material
FAZ03455_00	0457	2,5	PA
FAZ01918_03		1,2	
FAZ03433_02		4,2	PE
FAZ03433_00		2	
FAZ03532_00		4	PA
AZ301371 and further	10124350 and further	7,2	PE

Subject to alterations!

© BEKA 2018 All rights reserved!

01-1-10-30 state: 06.18EN

1090200384



BAIER + KÖPPEL GmbH + Co. KG

BEETHOVENSTRASSE 14
91257 PEGNITZ/BAVARIA
GERMANY

PO BOX 13 20
91253 PEGNITZ/BAVARIA
GERMANY

fon +49 9241 729-0
fax +49 9241 729-50

e-mail beka@beka-lube.de
web www.beka-lube.de



BEKA International

- ALGERIA**
 (S) BEKA LUBE ALGERIE
 Zone d'activite n°25
 25140 Ain-smara / Constantine
 fon +213 31 97 51 12
 fax +213 31 97 51 00
 e-mail n.hannache@beka-lube.dz
- AUSTRIA**
 (S) BEKA-Lube GmbH
 Rottweg 66
 5020 Salzburg
 fon +43 662 43 84 40
 fax +43 662 43 84 403
 e-mail office@beka-lube.at
- BELGIUM**
 (S) BEKA LUBE N.V.S.A.
 Demerstraat 32
 BE 3200 Aarschot
 fon +32 16 64 09 26
 fax +32 16 64 05 48
 e-mail info@beka-lube.be
- CANADA**
 (S) BEKA-LUBE Products Inc.
 6581 Kiltimat Road, Unit 2
 Mississauga, ON L5N 3T5
 fon +1 905 821 10 50
 fax +1 905 858 05 97
 e-mail info@beka-lube.com
- CHINA**
 (S) BEKA Lubrication Systems Co. Ltd.
 Room 1803, Building 1 Sandhill Plaza,
 No. 2290 Zuchongzhi Road
 Pudong New District, Shanghai 201210
 fon +86 21 61 46 29 88
 fax +86 21 61 46 29 89
 e-mail sales@bekaworld.cn
- FRANCE**
 (S) BEKALUBE FRANCE
 4, bis Rue de l'Artisanat
 89100 Paron
 fon +33 386 83 39 06
 fax +33 386 65 52 24
 e-mail contacts@bekalube.fr
- ITALY**
 (S) BEKALUBE s.r.l.
 Via Rossi 152
 I-20862 Arcore (MB)
 fon +39 039 61 80 088
 fax +39 039 61 75 23
 e-mail servizioclienti@bekalube.it
- JAPAN**
 (S) BEKA Japan Co., Ltd.
 7-5-8 Kumata
 Higashi Sumiyoshi Ku
 Osaka City, 546-0002
 fon +81 (0) 6 6713 2205
 fax +81 (0) 6 6713 2206
 e-mail info@bekajapan.jp
- KOREA**
 (R) BAIER + KÖPPEL Korea Liaison Office
 A-1406, Sunyudo Woolim Lions Valley
 149, Yangpyeong-ro,
 Yeongdeungpo-gu, Seoul (150-105)
 fon +82 2 20 38 09 88
 fax +82 2 20 38 89 34
 e-mail info@bekaworld.kr
- NETHERLANDS**
 (S) BEKA NEDERLAND B.V.
 Wagenmakerij 11
 4762 AV Zevenbergen
 fon +31 168 37 15 38
 fax +31 168 33 83 29
 e-mail info@beka.nl
- SPAIN**
 (S) BEKA-LUBE IBÉRICA S.L.U.
 C/Albasanz 14 Bis, 2ª J
 28037 Madrid
 fon +34 91 440 26 56
 fax +34 810 520 178
 e-mail beka@beka-lube.es
- SINGAPORE**
 (S) BEKAWORLD SINGAPORE PTE. LTD.
 51 Changi Business Park Central 2
 #07-10 The Signature
 Singapore 486066
 fon +65 65 38 94 18
 fax +65 65 38 94 28
 e-mail j.low@bekaworld.sg
- TURKEY**
 (P) BEKAMAKS MAKINA SANAYI VE TICARET
 LTD. Sti. Kucukyali Ticaret Merkezi
 B Blok No. 7 Girne Mah.
 34852 Maltepe / Istanbul
 fon +90 216 367 34 00
 fax +90 216 367 33 85
 e-mail info@bekamaks.com
- USA**
 (S) BEKAWORLD LP
 258 Sonwil Drive
 Buffalo, NY 14225
 fon +1 716 685 37 17
 fax +1 716 685 36 34
 e-mail info@us.bekaworld.com

Agencies

Argentina	Finland	Lithuania	Slovakia
Australia	Great Britain	Luxemburg	Slovenia
Belarus	Greece	Malaysia	South Africa
Bosnia	Hong Kong	New Zealand	Sweden
Brazil	Hungaria	Norway	Switzerland
Bulgaria	India	Poland	Ukraine
Croatia	Indonesia	Portugal	and others
Czechia	Iceland	Romania	
Denmark	Ireland	Russia	
Estonia	Latvia	Serbia	

- (S) BEKA Subsidiary
- (R) BEKA Rep Office
- (P) Partner

